

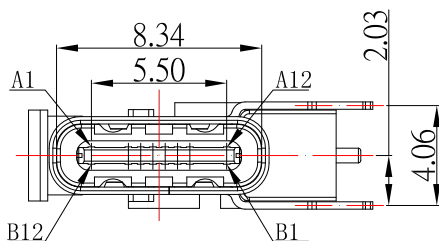
RECOMMENDED P.C.B. LAYOUT

SBC-160P3-20x-S410

鍍層厚度:

Blank : 1u"
2 : 15u"
3 : 30u"

A1	GND	B12	GND
A2		B11	
A3		B10	
A4	VBUS	B9	VBUS
A5	CC1	B8	SBU2
A6	D+	B7	D-
A7	D-	B6	D+
A8	SBU1	B5	CC2
A9	VBUS	B4	VBUS
A10		B3	
A11		B2	
A12	GND	B1	GND



SPECIFICATIONS

Electrical:

- Rating: 5.0 A
- Dielectric Withstand Voltage: 100V AC
- Contact Resistance: 40 mΩ Max
- Insulation Resistance: 100 MΩ Min

Mechanical:

- Connector Mate and Unmate Force
 - Mate force: 5~20 N
 - Unmate force: 8~20 N

Material:

- Housing: LCP
- Contact: C7025
- Shell: SUS

Finish:

- Contact: Plated Gold in Mating Area ;
Gold Plated on Solder Balls ;
Nickel under plated overall
- Shell: Nickel under Plated surface layer

CONTACT 建倚科技股份有限公司
CONTACT TECHNOLOGY CORP.

TOLERANCE UNLESS OTHERWISE STATED:
 Up to 5 ±0.2
 Above 5 ~ 15 ±0.3
 Above 15 ~ 30 ±0.4
 Above 30 ~ 50 ±0.5
 Angle ±0.3°

3RD. ANGEL'S

UNITS MM

DRAWN BY:	DATE	MAT'L	TITLE	CONNECTOR
Jack Lu	10/18/21			
CHECKED BY:	DATE	FINISH	MODLE	USB 3.1 側插母座 16 PIN
Jacky Chen	10/18/21			
APPROVED BY:	DATE	SCALE	DWG NO.	SBC-160P3-20x-S410
Tony Kao	10/18/21	1 : 1	PART NO.	SBC-160P3-20x-S410
		SHEET NO.	1 of 1	SIZE A4
				VER R